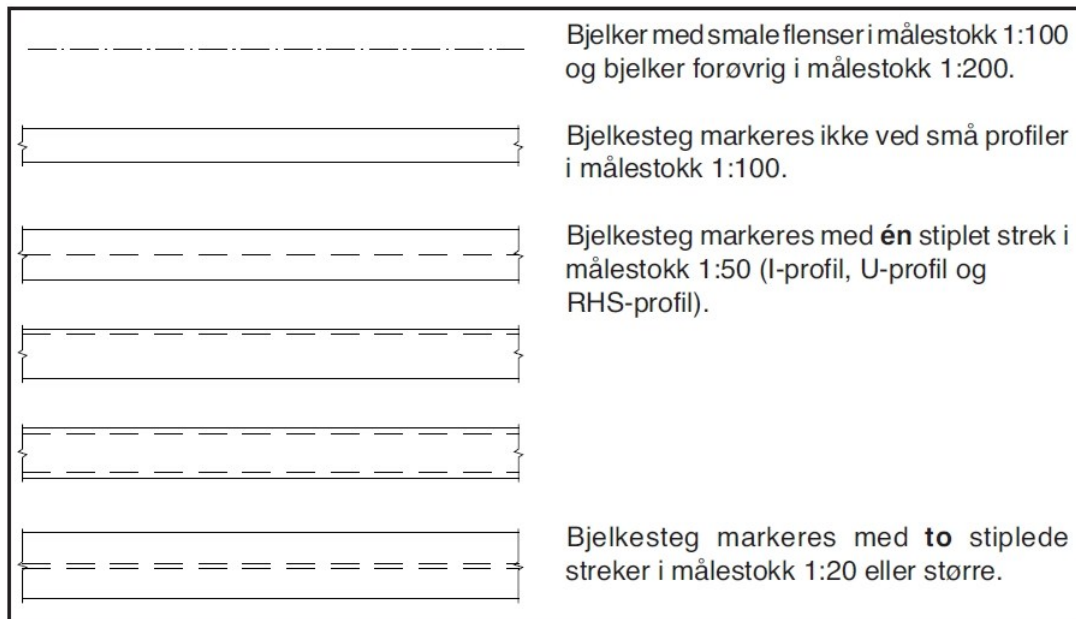


Supplerende fagstoff til kapittel 6, punkt 6.6 i Stål Håndbok Del 3:

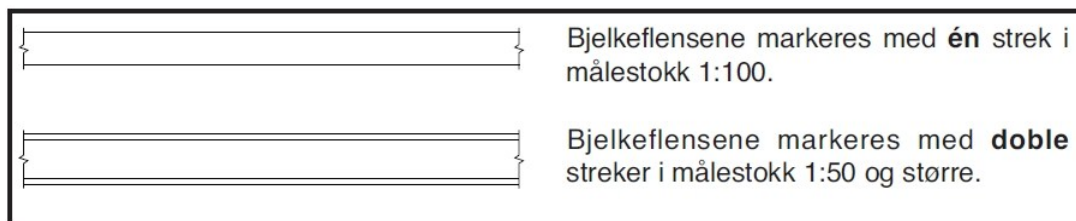
## Stålkonstruksjonstegninger

Eksempler på tegning av bjelker og søyler er vist i figurene 6.1-6.5.

Eksempler på stålkonstruksjoner er vist i figurene 6.6-6.9.



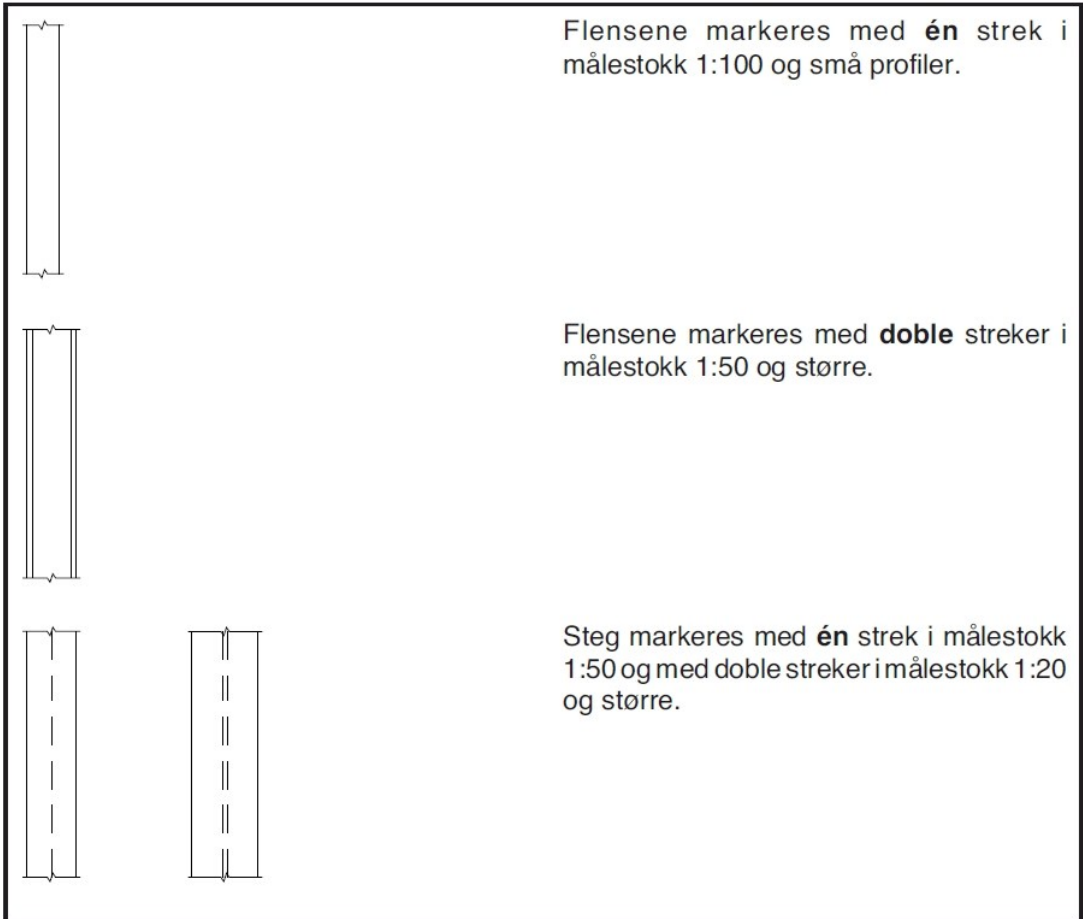
Figur 6.1 – Bjelker sett ovenfra



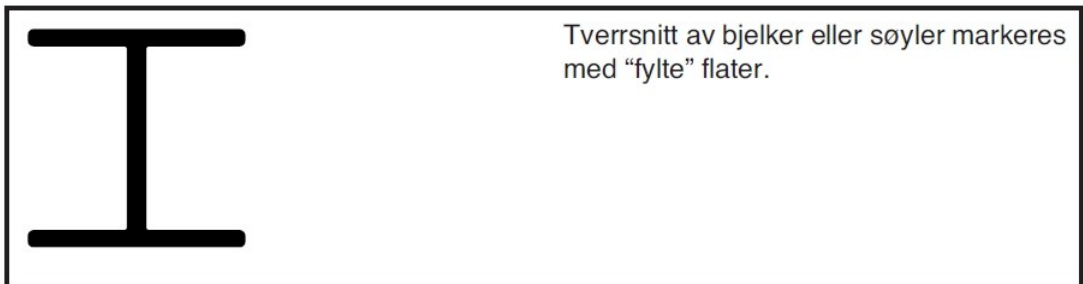
Figur 6.2 – Bjelker sett forfra



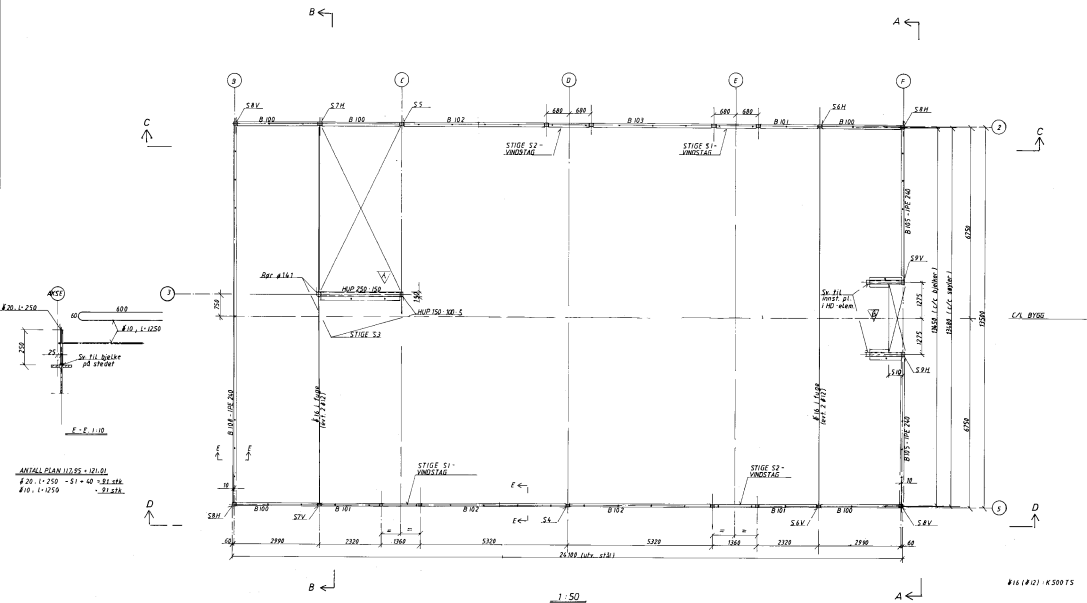
Figur 6.3 – Søyler sett ovenfra



Figur 6.4 – Søylar sett forfra

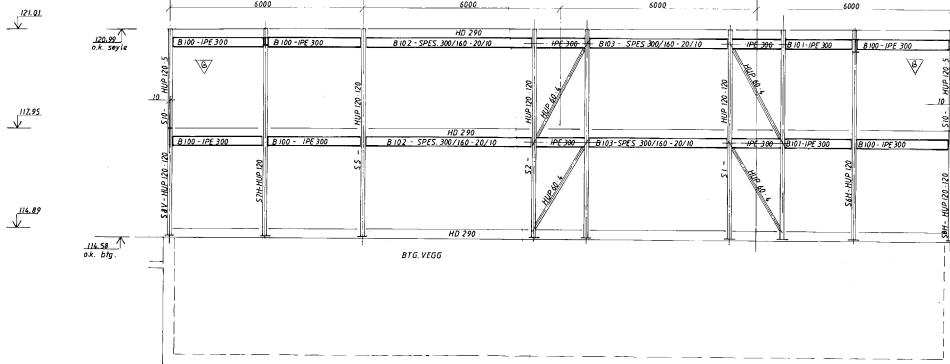


Figur 6.5 – Bjelker og søylar i snitt

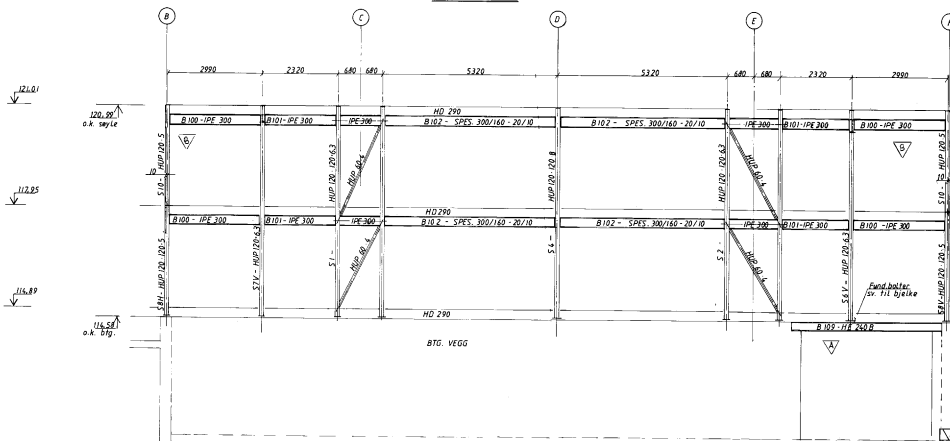


Figur 6.6

✓	476 - 92	Tilføyd pas nr og utsporing	20 /
✓	225 - 92	Endret utbytte	5 - 92
<b>KF</b> <small>Skulptorpark Kvalitet</small> <small>Skulptorpark opplyst</small> <small>Designarbeidshuset 21 1375 Oslo - Tlf: 022 76 02 60</small>			<small>Dato:</small> <small>Sign. nr.:</small> <small>11.06</small>
<b>ING. B. ROTHEN A/S, KONGSV.</b> <b>ODIN BYGG, TEISENV. 5</b>			<small>11.06</small>
<b>DEKKE OVER PLAN 1 - KT 11795</b>			

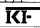



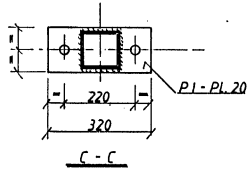
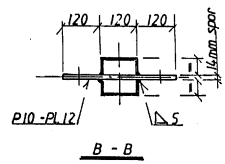
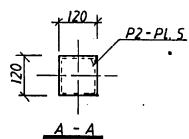
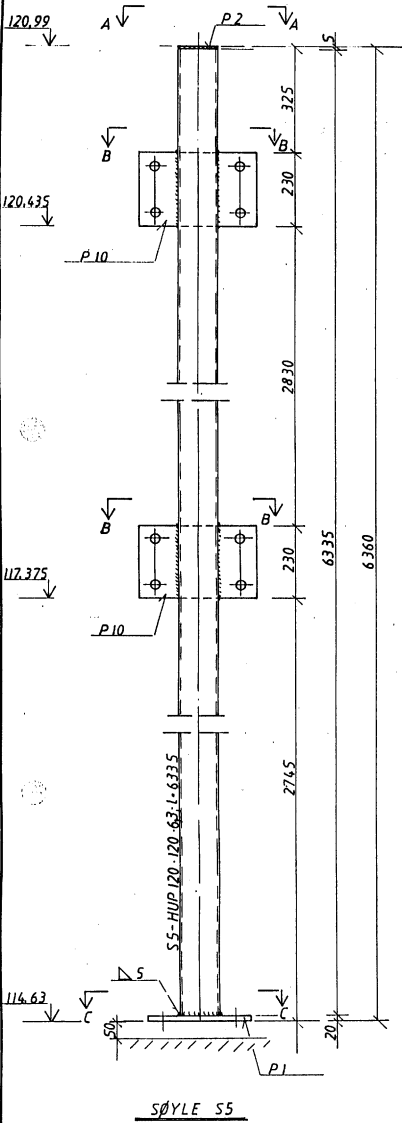
SNITT C - C



SNITT D - D

Figur 6.7

B / 27/8-92	Utvidet plan nr. 121.01
A / 4/8-92	Tilføyd pos. nr. og utf. bjelke
 Skandinavisk Teknisk Forsknings- og Ingeniørvesen Driftsgrænsetorvet 25 · 1370 Aker, Tlf. 022 78 02 00	
<b>ING. B. ROTHEIM A/S, KONGSV. ODIN BYGG, TEISENVN. 5</b>	
Dato: 22/5-92 Teg. nr.: 1456-3	
SNITT C - C og D - D	





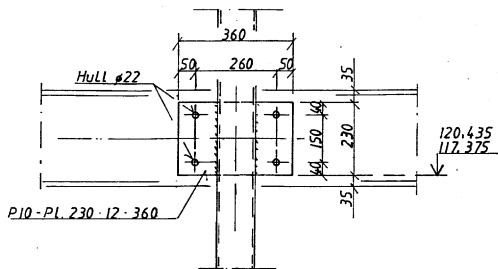
Pos.nr.	Beskrivelse	Ant.	Anm.
S5	HUP 120 · 120 · 63; L · 6335	1 stk	S.sv. til
P1	PL. 140 · 20 · 320 (1456-100)	1 "	1 stk.
P2	PL. 120 · 120 · 5 (— " —)	1 "	54
P10	PL. 230 · 12 · 360 (1456-101)	2 "	

Stålkvalitet: St S2-3

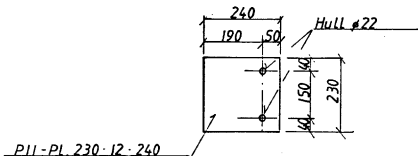
SØYLE S5

Figur 6-8

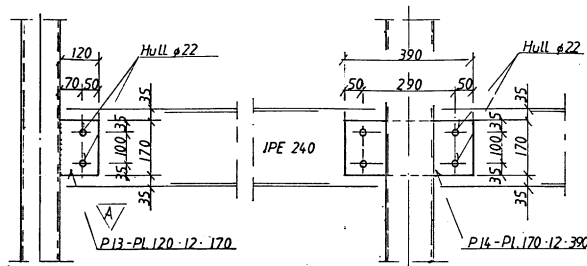
 Sivilingeniør Knut Finseth Rådgivende ingeniører Drengsrudbekken 25 · 1370 Asker · Tlf. (02) 78 02 60		
	ING. B. ROTHEIM A/S, KONGSV. ODIN BYGG A/S, TEISENVN. 5	Dato: 29 / 5 - 92
	SØYLE - S5	Tegn. nr.: 1456 - 11



DETALJ SØYLE HU120-BJELKE IPE 300

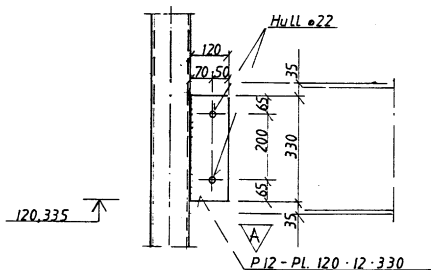


DETALJ SØYLE 120/150-BJELKE IPE 240



Pos. nr.	Beskrivelse	Ant.	Anm.
P10	Pl. 230 · 12 · 360	8 stk	
P11	Pl. 230 · 12 · 240	24 ·	
P12	Pl. 120 · 12 · 330	2 ·	
P13	Pl. 120 · 12 · 170	8 ·	
P14	Pl. 170 · 12 · 390	1 ·	

STÅLKVALITET: ST 52-3



DETALJ SØYLE HU120-IPE 400

Figur 6.9

A / 1/6-92	Endret P12 & P13 ; samt ant. P13		
<b>KI-</b>	Sivilingeniør Knut Finseth Rådgivende ingeniører Drengsrudbekken 25 - 1370 Asker - Tlf. (02) 78 02 60		
ING. B. ROTHEIM A/S ; KONGSV.			Dato:
ODIN BYGG A/S ; TEISENVN. 5			26 / 5-92
KNUTEPLATER VED			Tegn. nr.:
BJELKE / SØYLE			1456-101